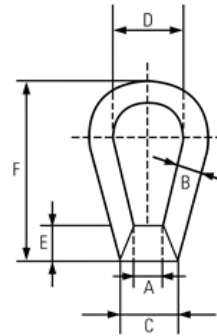


DROP FORGED BOWNUTS METRIC THREAD

- Material: Mild Steel C1015.
- Self colour finish.
- Marked with size, WLL, ID mark and CE.
- Supplied with EC declaration of conformity.



W.L.L tonnes	A (mm)	B (mm)	C (mm)	E (mm)	F (mm)	Weight (kgs/each)
0.23	8	10	32	16	64	0.15
0.36	10	10	32	16	64	0.15
0.53	12	12	38	17	73	0.27
1.01	16	12	38	17	73	0.29
1.58	20	14	45	25	102	0.50
2.28	24	17	50	29	124	0.90